



# RAM<sup>®</sup> MOUNTS

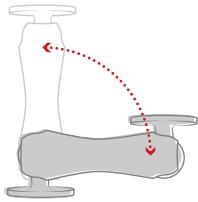
Agriculture



# About RAM® Mounts

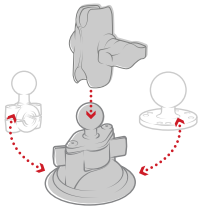
RAM® Mounts manufactures rugged and versatile mounting systems for cameras, tablets and other mobile devices that can be attached nearly anywhere. Unlike other mounts on the market, RAM® allows you to mount items where you need them most. The unique design of the RAM® Mounts system provides quick installation, adjustability, strength, vibration damping and durability—all at a low cost. Backed by a lifetime warranty, RAM® uses powder-coated marine-grade aluminum with lightweight and high-strength composites, stainless steel hardware and rubber balls.

## The RAM® Difference



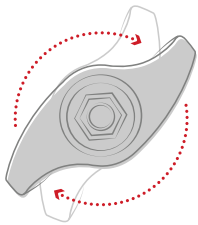
### Premium Design

The rubber ball and socket design of our mounting systems offers a secure hold, with near-infinite adjustability and vibration damping for the most demanding environments. With thousands of components trusted by users around the world, we've been able to design and develop mounting solutions that consumers and companies previously only dreamed were possible.



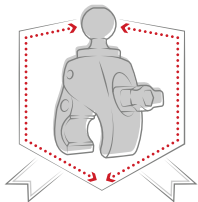
### Customizable

Take your phone mount from your truck to your tractor, or mix and match components to create your ideal mount. Because of the modularity of the RAM® system, you can customize your solution to fit your specific needs in almost any application.



### Quality Materials

A premium design deserves the highest quality materials available, from rubber and stainless steel to high-strength composites and marine-grade aluminum. Our facilities—including powder coating, die casting, rubber injection molding, and shock and vibration testing—help us deliver on this promise to bring you inventive mounting solutions.



### Lifetime Warranty

It's simple. Our reputation as the leader of premier mounting systems means if we build it, then we guarantee it. We're confident in the quality of our products, and with our warranty, you can be too. Learn more [rammount.com/warranty](http://rammount.com/warranty) about our lifetime warranty.

# RAM® in the Agriculture Industry

Technological innovation within the agriculture industry has taken off at an unprecedented rate in recent years. What was once a rarity is now commonplace—such as seeing four or five displays in a single cab. While it can be difficult to keep up with technological innovations, RAM® Mounts can help you build for the future.

We've worked closely alongside vehicle and display manufacturers to provide farmers with the best in-cab experience possible. It wasn't always easy to install or adjust the technology being placed in the cab, but we're proud to innovate and help farmers around the world farm more efficiently, effectively and easily.

Depend on RAM® to bring value to your operations with a wide range of mounting solutions built specifically with agriculture in mind.



# Popular Mounting Locations

## Tractor Cab



- 1,2 | Implement bar supports rail mounts including the RAM® Torque™, RAM® Tough-Claw™ and U-bolt mounts
- 3 | Side window is able to support any RAM® Twist-Lock™ suction cup mount (available in single, double and triple suction)
- 4 | Any flat surface in the tractor cab can accommodate drill-down systems, including double ball mounts or RAM® Tough-Track™
- 5 | Mount any device to the threaded bosses of your cab pillar using the RAM® Tough-Ball™
- 6 | Secure any RAM® Twist-Lock™ suction cup mount to your cab windshield to support any phone, display or sun visor

# Popular Mounting Locations

## Tractor Cab

1



RAM® Level Cup™ XL, pg. 10  
 Socket Arm, pg. 11  
 RAM® Torque™ Mount, pg. 12

4



Device Cradles and Adapters, pg. 10  
 Socket Arms, pg. 11  
 RAM® Track Ball™, pg. 19  
 RAM® Tough-Track™, pg. 17

2



RAM® X-Grip® Phone Mount, pg. 9  
 Socket Arm, pg. 11  
 RAM® Tough-Claw™, pg. 12

5



Device Adapter, pg. 14  
 Socket Arm, pg. 15  
 Threaded Ball Base, pg. 16

3



Device Adapter, pg. 14  
 Socket Arm, pg. 15  
 RAM® Twist-Lock™ Suction Cup, pg. 16

6



Sun Visor, pg. 10  
 Socket Arm, pg. 11  
 RAM® Twist-Lock™ Suction Cup, pg. 12

# How It Works

1

## Choose a Device Adapter

RAM® offers a wide selection of adapters and cradles for your specific device.

2

## Choose an Arm

Select an arm based on your desired length and placement.

3

## Choose a Base

Select from a variety of bases to help secure your device where you need it.



## Ball Size Selection Guide



### B Size

- 1" diameter ball
- Holds up to 2 lbs
- Ideal for phones, cameras and cup holders



### C Size

- 1.5" diameter ball
- Holds up to 4 lbs
- Ideal for tablets and small monitors



### D Size

- 2.25" diameter ball
- Holds up to 6 lbs
- Ideal for display integrations

# Build a Mount

## 1 | Choose a Device Adapter



**RAM-2461U**  
75mm VESA  
Plate Adapter



**RAM-202U**  
4-Hole AMPS Round  
Plate Adapter



**RAM-270U**  
Plate Adapter for John Deere  
GreenStar 2630 Display



**RAM-HOL-UN8BCU**  
RAM® X-Grip® Holder  
for 7"-8" Tablets

## 2 | Choose an Arm



**RAM-201U-B**  
3.56" Short Socket Arm



**RAM-201U**  
5.69" Medium Socket Arm



**RAM-201U-D**  
9.125" Long Socket Arm

## 3 | Choose a Base



**RAM-235U**  
.75" to 1.25"  
Diameter U-Bolt Base



**RAM-202U**  
4-Hole AMPS  
Drill-Down Base



**RAP-365-224-1U**  
RAM® Twist-Lock™ Triple Suction Base



**RAM-408-112-15U**  
1.125" to 1.5" Diameter  
RAM® Torque™ Base

## B Size Wireless Chargers

The RAM® Tough-Charge™ with X-Grip® Technology is the world's first patented, universal waterproof wireless charging cradle for phones. Designed with spring-loaded RAM® X-Grip® Technology, this cradle features an 'X' design that expands and contracts to secure nearly any phone while taking advantage of wireless charging via the Qi standard. For added security and peace of mind, a safety tether is included that's recommended for outdoor applications. On the bottom of the cradle, a support leg can be adjusted to the ideal position or removed altogether. Available in a variety of mounting kits, ensure wireless charging capabilities across a wide range of vehicles.



**WATER  
PROOF**

\*Safety tether included for rugged  
and outdoor applications



### RAM-HOL-UN12WB

- Minimum Width: 2.375" (Minimum Height = 3.375"), Maximum Width = 3.25" (Minimum Height = 2.25"), Depth = 0.875"
- 1" Ball (B)



## B Size Wireless Chargers

As part of the spring-loaded RAM® Quick-Grip™ family, this patented, universal waterproof Qi wireless charging cradle allows for single-handed placement and removal of your phone. Both the top and bottom cups feature rubber to help hold your device firmly in place, charging phones that are within the compatible dimensions. Like the RAM® Tough-Charge™, a device tether is included for added security and peace of mind. In addition, the RAM® Quick-Grip™ Wireless comes in a variety of mounting kits so you can mount it nearly anywhere you need it.



\*Safety tether included for rugged and outdoor applications

### **RAM-HOL-UN14WB**

- Height Range: 5.625" – 6.75",  
Max Width: 3.125",  
Max Depth: 0.70"
- 1" Ball (B)

# B Size Holders & Adapters

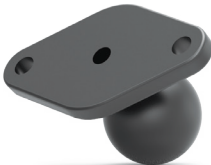
The RAM® X-Grip® keeps your phone secure and accessible, no matter what base it's connected to. The spring-loaded design of the RAM® X-Grip® means it can support any size phone with or without a case or sleeve. For use in high vibration environments, the RAM® X-Grip® comes with an easy-to-attach rubber tether for added security. Diamond, rectangular and round adapter plates are also available with the AMPS hole pattern.



**RAM-HOL-UN7BU**  
RAM® X-Grip® Holder  
for Phones up to 3.25" Wide



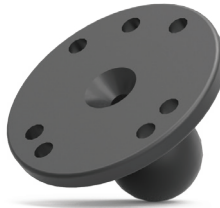
**RAM-HOL-UN10BU**  
RAM® X-Grip® Holder for  
Phones up to 4.5" Wide



**RAM-B-238U**  
2-Hole AMPS  
Diamond Plate  
Adapter



**RAM-B-347U**  
4-Hole AMPS  
Rectangular Plate  
Adapter



**RAM-B-202U**  
4-Hole AMPS  
Round Plate  
Adapter



Seen in this photo:  
RAP-B-400U,  
Small RAM® Tough-Claw™  
RAM-B-201U,  
Medium Socket Arm  
RAM-HOL-UN7BU,  
Universal RAM® X-Grip® for Phones

## B Size Holders & Adapters

For mounting cameras, the RAP-B-202U-GOP1 is compatible with action cameras featuring a standard two-pronged attachment. For larger cameras with threaded post attachment points, look to the RAP-B-379U-252025 and RAM-B-202AU. As for your drink, both the self-leveling RAM® Level Cup™ and RAM® Level Cup™ XL are available to help you avoid spills. The RAM® Level Cup™ is ideal for cans and small drinks while the RAM® Level Cup™ XL's adjustable height option secures most containers up to 32oz. And to block out the sun, check out our RAM® dark green sun visor.



**RAP-B-202U-GOP1**  
2-Prong Action  
Camera Adapter



**RAP-B-379U-252025**  
1/4"-20 RAM® Tough-Ball™  
Camera Adapter



**RAM-B-202AU**  
1/4"-20 Camera Adapter  
with Round Plate



**RAM-B-132BU**  
RAM® Level Cup™  
Drink Cup Holder  
• 12-16 oz. drinks  
• Cans  
• Small bottles



**RAP-B-417BU**  
RAM® Level Cup™ XL  
Drink Cup Holder  
• 16-32 oz. drinks  
• Tumblers  
• Nalgene, Pelican, YETI



**RAP-393-G1U**  
8" x 13" Dark  
Green Sun Visor

## B Size 1" Socket Arms

RAM® socket arms range from 2.42" to 6" in length and are interchangeable, allowing you to customize your mounting solution. With the RAM® Add-A-Ball™, connect another device to your existing mount with another 1" ball. Connect two arms using the RAM® Double Ball Adapter. For theft deterrence, the RAM® Pin-Lock™ Security Knob replaces the standard knob to offer added security.



**RAM-B-201U-A**  
2.42" Short Socket Arm



**RAM-B-201U**  
3.73" Medium Socket Arm



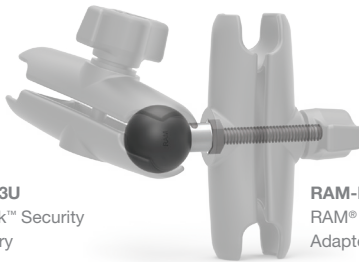
**RAM-B-201U-C**  
6" Long Socket Arm



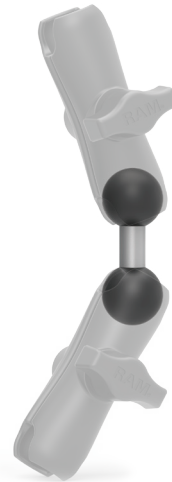
**RAP-B-200-12U**  
RAM® Double Socket Swivel Arm



**RAP-S-KNOB3U**  
RAM® Pin-Lock™ Security  
Knob Accessory



**RAM-B-273U**  
RAM® Add-A-Ball™  
Adapter Accessory



**RAM-B-230U**  
Double Ball Adapter  
Accessory



Seen in this photo:  
 RAM-HOL-AP19, Form-Fit Cradle for the iPhone 6 & 7 Plus  
 RAM-B-238U, Diamond Ball Adapter  
 RAM-B-201U, Medium Socket Arm  
 RAM-B-273U, RAM® Add-A-Ball™ Accessory  
 RAM-HOL-AP17U, RAM® EZ-Roll'r™ Cradle for the Apple iPad Air 1-2 & iPad Pro 9.7  
 RAM-B-316-1-202U, Universal RAM® No-Drill™  
 RAM® Pod™ I Vehicle Mount

# B Size 1" Ball Bases

For phones, cameras and cup holders, choose from a range of B size 1" ball bases. For bases featuring AMPS hole patterns, choose between diamond, round and rectangular plates. If you need to mount to a rail, use the RAM® Torque™—available for various size rails, as well as single and double U-bolt bases. Other options include the popular RAM® Tough-Claw™ for rails, RAM® Twist-Lock™ suction cup for nonporous surfaces, and the RAM® Tough-Mag™ for magnetic surfaces.



**RAM-B-238U**  
2-Hole AMPS Diamond  
Drill-Down Base



**RAM-B-202U**  
4-Hole AMPS Round  
Drill-Down Base



**RAM-B-347U**  
4-Hole AMPS Rectangular  
Drill-Down Base



**RAM-B-408-75-1U**  
.75" to 1" Diameter  
RAM® Torque™ Base



**RAM-B-408-112-15U**  
1.125" to 1.5" Diameter  
RAM® Torque™ Base



**RAM-B-231ZU**  
.5" to 1.25" Diameter  
Single U-Bolt Base



**RAM-B-235U**  
.75" to 1.25" Diameter  
Double U-Bolt Base



**RAM-B-404U**  
1" to 1.875" Diameter  
RAM® Tough-Claw™ Base



**RAM-B-224-1U**  
RAM® Twist-Lock™  
Single Suction Cup Base



**RAM-B-189B-202U**  
RAM® Twist-Lock™ Double Suction Cup Base



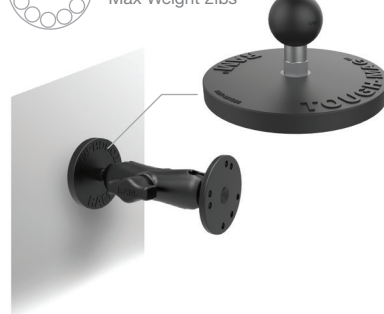
6 magnets  
Max Weight 2lbs



**RAM-B-MAG66U**  
RAM® Tough-Mag™ 66MM Diameter Base  
with 1" (B) Ball



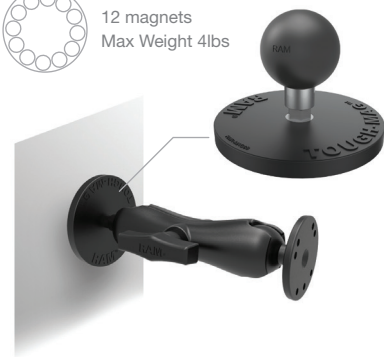
12 magnets  
Max Weight 2lbs



**RAM-B-MAG88U**  
RAM® Tough-Mag™ 88MM Diameter Base  
with 1" (B) Ball



12 magnets  
Max Weight 4lbs



**RAM-MAG88U**  
RAM® Tough-Mag™ 88MM Diameter Base  
with 1.5" (C) Ball

## C Size Holders & Adapters

For mounting your tablet, the RAM® X-Grip® is available for tablets ranging from 7" to 12" and phones up to 4.5" wide. For large drinks and containers, the self-leveling RAM® Level Cup™ XL integrates an adjustable height feature to keep your drink in place. Whether you have a Nalgene, Pelican, Contigo or Hydro Flask, the RAM® Level Cup™ XL will secure most 32oz containers.



**RAM-HOL-UN7BCU**  
RAM® X-Grip® Holder for Phones  
up to 3.25" Wide



**RAM-HOL-UN10BCU**  
RAM® X-Grip® Holder for Phones  
up to 4.5" Wide



**RAM-HOL-UN8BCU**  
RAM® X-Grip® Holder for 7"-8" Tablets



**RAM-HOL-UN9U**  
RAM® X-Grip® Holder for 9"- 10" tablets  
Compatible with RAM-202U ball adapter



**RAM-HOL-UN11U**  
RAM® X-Grip® Holder for 11"- 12" tablets  
Compatible with RAM-202U ball adapter



**RAP-417BU**  
RAM® Level Cup™ XL Drink Cup Holder

# C Size Holders & Adapters

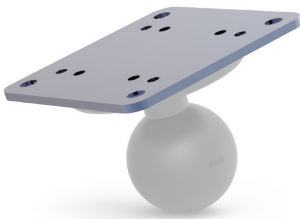
Choose from a variety of adapters to secure your device, including three VESA plate adapters and one specifically for the John Deere GreenStar 2630 Display. Plate adapters with the AMPS hole pattern are available in round, diamond and rectangular versions. For cameras with a threaded post attachment, look to the RAM-202AU, RAM-202CU and RAP-379U-252025.



**RAM-2461U**  
75mm VESA Plate Adapter



**RAM-246U**  
100mm VESA Plate Adapter



**RAM-202-225B-1U**  
60mm x 60mm VESA Plate Adapter  
Note: RAM-202U ball is required



**RAM-2462U**  
35mm x 75mm  
VESA Plate Adapter



**RAM-270U**  
Plate Adapter for John Deere  
GreenStar 2630 Display



**RAM-202U**  
4-Hole AMPS Round  
Plate Adapter



**RAM-238U**  
2-Hole AMPS Diamond  
Plate Adapter



**RAM-347U**  
4-Hole AMPS Rectangular  
Plate Adapter



**RAM-202U-225**  
2" x 2.5" Rectangular  
Plate Adapter  
Hole Pattern: 1.5" x 2"



**RAM-202AU**  
1/4"-20 Camera Adapter  
with Round Plate



**RAM-202CU**  
3/8"-16 Camera Adapter  
with Round Plate



**RAP-379U-252025**  
1/4"-20 RAM® Tough-Ball™  
Camera Adapter

## C Size 1.5" Socket Arms

Ranging from 3.56" to 9.13" in length, C size 1.5" socket arms are interchangeable and allow you to customize your mounting solution. With the RAP-BC-201U, connect an existing B size ball to a C size ball. With the double ball adapter and triple ball adapter, connect two or three socket arms or mounts. For added security, the RAM® Pin-Lock™ security knob replaces the standard knob to offer added security.



**RAM-201U-B**  
3.56" Short Socket Arm



**RAM-201U**  
5.69" Medium Socket Arm



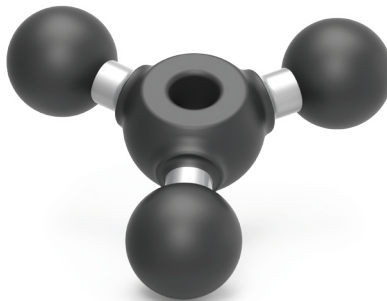
**RAM-201U-D**  
9.13" Long Socket Arm



**RAP-BC-201U**  
B Size to C Size Socket Arm



**RAM-230U**  
Double Ball Adapter Accessory



**RAM-289U**  
Triple Ball Adapter Accessory



**RAP-S-KNOB5U**  
RAM® Pin-Lock™ Security Knob Accessory



## C Size 1.5" Ball Bases

For tablets and small monitors, the C size 1.5" ball base is a great starting point. Choose from drill-down diamond, round and rectangular plates featuring the AMPS hole pattern that are ideal for tablets and small monitors, as well as U-bolt and RAM® Torque™ bases for rails. The heavy duty RAM® Twist-Lock™ Triple Suction Cup base provides a strong hold to nonporous surfaces, and the RAM® Tough-Ball™ and Threaded Ball are excellent solutions for threaded inserts, if available.



**RAM-202U**  
4-Hole AMPS Round  
Drill-Down Base



**RAM-347U**  
4-Hole AMPS Rectangular  
Drill-Down Base



**RAM-238U**  
2-Hole AMPS Diamond  
Drill-Down Base



**RAM-202U-225**  
2" x 2.5" Rectangular  
Drill-Down Base  
Hole Pattern: 1.5" x 2"



**RAM-111BU**  
6.25" x 2" Rectangular  
Drill-Down Base



**RAM-235U**  
.75" to 1.25" Diameter  
U-Bolt Base



**RAM-235-1U**  
1.25" to 1.5" Diameter  
U-Bolt Base



**RAM-408-75-1U**  
.75" to 1" Diameter  
RAM® Torque™ Base



**RAM-408-112-15U**  
1.125" to 1.5" Diameter  
RAM® Torque™ Base



**RAP-365-224-1U**  
RAM® Twist-Lock™  
Triple Suction Base



**RAP-379U-M812510**  
RAM® Tough-Ball™  
Base for M8-1.25  
Threaded Inserts



**RAM-349U**  
Threaded Ball  
Base for M10-1.25  
Threaded Inserts

# RAM® Tough-Track™

A track mounting system provides a clean and innovative way to mount a variety of devices in your cab. With the RAM® Tough-Track™, customize your system with a variety of track lengths and components—available for tubes, rails, and bars as well top-loading composite and modular aluminum versions for flat surfaces. To attach modular aluminum tracks, use the center or 90-degree top-loading connectors.

## Top-Loading Composite RAM® Tough-Track™



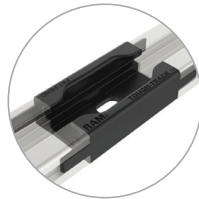
**RAP-TRACK-A5U**  
Overall length: 7"  
Inside Track Length: 5"

**RAP-TRACK-A9U**  
Overall length: 10.75"  
Inside Track Length: 9"

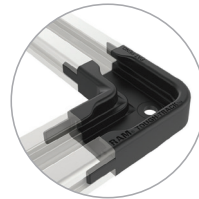
**RAP-TRACK-A12U**  
Overall length: 14.5"  
Inside Track Length: 12"

**RAP-TRACK-A16U**  
Overall length: 18.5"  
Inside Track Length: 16"

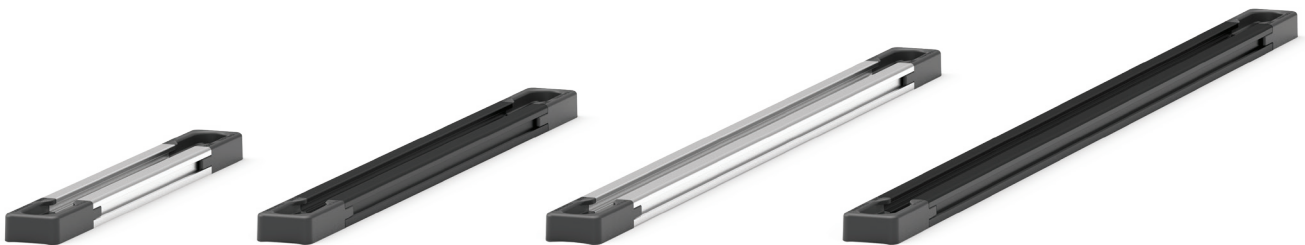
## Modular Aluminum RAM® Tough-Track™



**RAM-TRACK-EXA-CCU**  
Center Top-Loading Connector



**RAM-TRACK-EXA-CC90U**  
90-Degree Top-Loading Connector



■ Matte Silver Color  
Track Length: 5"  
**RAM-TRACK-EXA-5U**

■ Matte Silver Color  
Track Length: 9"  
**RAM-TRACK-EXA-9U**

■ Matte Silver Color  
Track Length: 13"  
**RAM-TRACK-EXA-13U**

■ Matte Silver Color  
Track Length: 17"  
**RAM-TRACK-EXA-17U**

■ Matte Black Color  
Track Length: 5"  
**RAM-TRACK-EXA-5BU**

■ Matte Black Color  
Track Length: 9"  
**RAM-TRACK-EXA-9BU**

■ Matte Black Color  
Track Length: 13"  
**RAM-TRACK-EXA-13BU**

■ Matte Black Color  
Track Length: 17"  
**RAM-TRACK-EXA-17BU**

# RAM® Tough-Track™

## RAM® Tough-Track™ for Rails



**RAP-TRACK-B7U**  
Rail Diameter Range: 5/8" - 1.25"  
Inside Track Length: 7"



**RAP-TRACK-B12U**  
Rail Diameter Range: 5/8" - 1.25"  
Inside Track Length: 12"



**RAP-TRACK-B18U**  
Rail Diameter Range: 5/8" - 1.25"  
Inside Track Length: 18"



**RAP-TRACK-B7HU**  
Rail Diameter Range: 1.75" - 2"  
Inside Track Length: 7"



**RAP-TRACK-B12HU**  
Rail Diameter Range: 1.75" - 2"  
Inside Track Length: 12"



**RAP-TRACK-B18HU**  
Rail Diameter Range: 1.75" - 2"  
Inside Track Length: 18"

## RAM® Tough-Track™ with RAM® Tough-Claw™



**RAP-400-TRACKU**  
RAM® Tough-Claw™ Size: **SMALL**  
Rail Diameter Range: 0.625" to 1.5"



**RAP-404-TRACKU**  
RAM® Tough-Claw™ Size: **MEDIUM**  
Rail Diameter Range: 1" to 1.875"



**RAP-401-TRACKU**  
RAM® Tough-Claw™ Size: **LARGE**  
Rail Diameter Range: 1" to 2.25"

# RAM® Track Ball™

Designed to be compatible with all track mounting systems, RAM® Track Ball™ bases provide a universal mounting solution for a wide variety of devices. A quick turn of the ball allows the base to slide along tracks, giving you the ultimate flexibility in positioning your gear.



Seen in this photo:  
RAM-TRACK-EXA-9U, Modular Aluminum RAM® Tough-Track™  
RAP-HOL-UN7B-354-TRA1, RAM® Track Ball™ Mount with Universal RAM® X-Grip®  
RAM-B-238U, Diamond Ball Device Adapter  
RAM-B-201U, Medium Socket Arm  
RAP-B-354U-TRA1, RAM® Track Ball™

# D Size 2.25" Ball Adapters

Several D size ball adapters are available for large electronics, including VESA plate adapters. Other adapters include the 2.5" round plate adapter with 4-hole AMPS pattern, the 3.68" round plate and rectangular plates with 4-hole patterns.



**RAM-D-254U**  
2.5" Round Plate Adapter  
4-Hole AMPS Hole Pattern



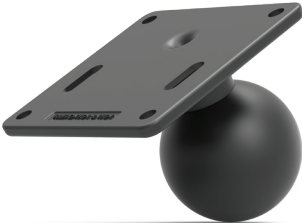
**RAM-D-202U**  
3.68" Round Plate Adapter



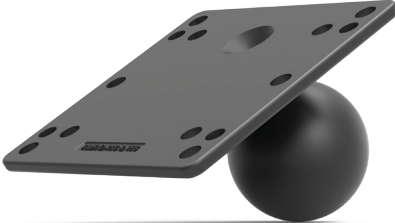
**RAM-D-202U-24**  
2" x 4" Rectangular Plate Adapter  
1.5" x 3.5" 4-Hole Pattern



**RAM-D-202U-25**  
2" x 5" Rectangular Plate Adapter  
1.5" x 4.5" 4-Hole Pattern



**RAM-D-2461U**  
75mm VESA Plate Adapter



**RAM-D-246U**  
100mm VESA Plate Adapter



**RAM-D-2462U**  
35mm x 75mm VESA Plate Adapter

## D Size 2.25" Socket Arms

D size socket arms range from 5.1" to 12.98" in length, and the double ball adapter gives you the ability to connect two socket arms. With the RAM® Hi-Torq™ wrench accessory that matches the socket arm's knob, get the tight hold you desire. For added security, check out the RAM® Pin-Lock™ security nut accessory.



## D Size 2.25" Ball Bases

For display integrations, RAM® offers D size 2.25" ball bases. Choose from the 3.68" round drill-down base, the 2.5" round drill-down base with AMPS hole pattern, rectangular plate adapters with 4-hole patterns and a rectangular drill-down base. For mounting to rails from .75" to 1.5", look to the double U-bolt base.



**RAM-D-202U**  
3.68" Round  
Drill-Down Base



**RAM-D-254U**  
2.5" Round Drill-Down Base  
4-Hole AMPS Hole Pattern



**RAM-D-202U-24**  
2" x 4" Rectangular Plate Adapter  
1.5" x 3.5" 4-Hole Pattern



**RAM-D-111BU**  
3" x 11" Rectangular Drill-Down Base



**RAM-D-202U-25**  
2" x 5" Rectangular Plate Adapter  
1.5" x 4.5" 4-Hole Pattern



**RAM-D-235U**  
.75" to 1.25"  
Diameter U-Bolt Base



**RAM-D-235-1U**  
1.25" to 1.5"  
Diameter U-Bolt Base

# IntelliSkin® with GDS®

## GDS® Always Protected. Always Connected.™

IntelliSkin® is a protective sleeve that features an integrated power connector compatible with any GDS® charging dock, allowing for seamless integration from your tractor to your vehicle. This innovative solutions prevents damage to the device's charging port and creates a universal docking platform compatible with any device wrapped with an IntelliSkin®. Add functionality for your devices by simplifying the frequent docking and undocking of phones and tablets.



The distinctive "D" product shape of the GDS® connector is a trademark of National Products Inc.



## Peripherals



GDS® View™



GDS® Keyboard™



GDS® Audio™



GDS® Hub™



GDS® Charge™



# Think Outside The Tractor Cab

From ATVs and UTVs to work trucks, you can find RAM® everywhere in the agriculture industry and anywhere on the farm. Our interchangeable mounting solutions are the most versatile of their kind—move almost any mount from one vehicle with a base and arm to another vehicle with a base and arm—meaning you can scale without spending money on an entirely new system.

You can always feel confident knowing that RAM® Mounts are backed by a lifetime warranty. We believe in the product so much that we're confident it can support nearly any mounting need you have. If you have a custom mounting need, get in touch with our agriculture mounting experts at [sales@rammount.com](mailto:sales@rammount.com).



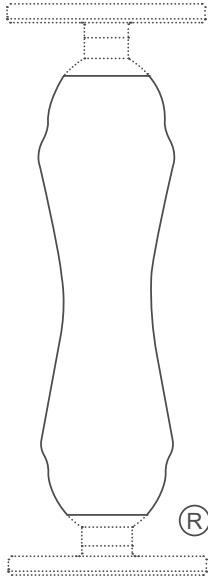
## Partner Highlight Section

Here at RAM® Mounts, we believe that unfathomable things are possible with ingenuity. With a portfolio of more than 5,000 SKUs paired with innovative engineers and product experts in-house, we have the tools and expertise needed to create solutions that you didn't know were possible. We have the ability to solve your mounting challenges quickly, efficiently and cost effectively.

No matter your company's size, you can trust RAM® Mounts to deliver ingenious solutions that do exactly what you need them to do.



# The Shape That Started It All



RAM® double socket arms with their distinctive Hourglass Shape are recognized globally as a symbol of the reliability, quality and durability of this line of products. The Hourglass Shape is a registered trademark of National Products Inc.

The unique RAM® Mounts system offers a full line of interchangeable mounting bases, extensions, device adapters and accessories to secure your gear where you want it. See all of the innovative products and solutions RAM® manufactures at [rammount.com](http://rammount.com).



The distinctive "X-Grip" product shape is a trademark of National Products Inc.



The distinctive "D" product shape of the GDS® connector is a trademark of National Products Inc.

RAM® Mounts is a division of National Products Inc.  
8410 Dallas Avenue South  
Seattle, WA 98108  
Phone: 800.497.7479  
[sales@rammount.com](mailto:sales@rammount.com)  
[rammount.com](http://rammount.com)

Lifetime Warranty  
Patents and Trademarks  
[rammount.com/ip](http://rammount.com/ip)

Contact Us  
sales@rammount.com  
1-800-497-7479



Join Our Community



NPI-CAT-AGRICULTURE19  
January 2020

